

Speed Queen®

Multi-Housing

Coin Operated

SC20

SC25

SC30

SC40

Washer-Extractors

20 lb., 25 lb., 30 lb. & 40 lb.

Description

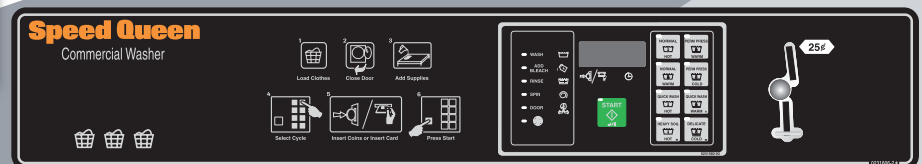
- Electromechanical timer control
 - Four preset wash formulas
 - Hot for heavy soils and whites
 - Warm for medium soils and whites or light soil & permanent press
 - Cold for delicates, knits & light soiled
- Fully programmable B-Micro control
 - Offers eight pre-programmed cycles
 - Maximum cleaning in small amount of time
 - Easy to operate with separate start pad
 - Cycle symbols to match garment care labels
- Cycle times adjustable
 - Factory present 21.5 minutes
- Digital coin drop activation



Electromechanical



B-Micro



Features & Benefits

- Heavy duty construction.
- Door lock delay. In case of power failure, 60 second time delay allows customers to remove garments.
- Multi-compartment dispenser. Self-cleaning, dispenses detergent for prewash, main wash and fabric softener. Clearly marked simple to use.



- Large door opening. Makes loading and unloading fast and easy.
- Reversing wash action. Thoroughly cleans clothes.
- Low water usage. Saves water and energy.
- Heavy duty bearings and trunnion assembly.
- Superior serviceability. Easy to remove top and front panels.



Commercial Built to Last Longer

Specifications

| Model | SC20 | SC25 | SC30 | SC40 | |
|--|-----------------|----------------------|----------------------|----------------------|----------------------|
| Capacity - lb. (kg) | 20 (9) | 25 (11.3) | 30 (13.6) | 40 (18) | |
| Width - in. (mm) | 26" (660) | 26" (660) | 29" (737) | 30 5/8" (778) | |
| Depth - in. (mm) | 29 13/16" (757) | 33 13/16" (859) | 34 13/16" (884) | 40 3/16" (1021) | |
| Height - in. (mm) | 42 7/8" (1089) | 44 7/8" (1140) | 45 7/8" (1165) | 47 7/8" (1216) | |
| Cylinder Diameter - in. (mm) | 21" (533) | 21" (533) | 24" (610) | 26 1/4" (667) | |
| Cylinder Depth - in. (mm) | 13" 3/4 (349) | 18 3/4" (457) | 16" (406) | 20 1/4" (514) | |
| Cylinder Volume - cu. ft. (liters) | 2.76 (78.1) | 3.76 (106) | 4.19" (118) | 6.34 (180) | |
| Door Opening Size - in. (mm) | 11 5/8" (295) | 11 5/8" (295) | 14 11/32" (364) | 16 1/4" (413) | |
| Door Bottom to Floor - in. (mm) | 14 3/8" (365) | 14 3/8" (365) | 14" (356) | 14 1/2" (368) | |
| G-Factor (High Extract) | 83.1 | 83.5 | 73.3 | 89.9 | |
| Wash Speed - RPM | 57 | 57 | 49 | 51 | |
| Extract Speed - RPM | 528 | 528 | 464 | 491 | |
| Water Inlet Connection - in. (mm) | 3/4" (19) | 3/4" (19) | 3/4" (19) | 3/4" (19) | |
| Drain Diameter - in. (mm) | 2" (52) | 2" (52) | 2" (52) | 3" (76) | |
| Drain Height to Floor - in. (mm) | 4 1/2" (114) | 4 1/2" (114) | 4" (100) | 4 3/4" (122) | |
| Motor HP (wash) - HP (kW) | .15 (.11) | .25 (.19) | .24 (.18) | .40 (.3) | |
| Motor HP (extract) - HP (kW) | .74 (.55) | 1.4 (1.04) | 1.34 (1.0) | 1.8 (1.3) | |
| Voltage / Hz / Phase* Circuit Breaker - FLA amp | B | 110-120/60/1 • 20-16 | N/A | N/A | N/A |
| | C | 380-415/50/3 • 15-4 | 380-415/50/3 • 15-4 | 380-415/50/3 • 15-4 | 380-415/50/3 • 15-5 |
| | D | 220-240/50/3 • 15-4 | 220-240/50/3 • 15-6 | 220-240/50/3 • 15-6 | 220-240/50/3 • 20-8 |
| | E | 220-240/50/1 • 20-10 | 220-240/50/1 • 20-10 | 220-240/50/1 • 20-10 | N/A |
| | F | N/A | 200-50/3 • 15-5 | N/A | N/A |
| | O* | 208-240/60/3 • 15-5 | 208-240/60/3 • 15-6 | 208-240/60/3 • 15-5 | 208-240/60/3 • 20-7 |
| | Y | 208-240/60/1 • 15-10 | 208-240/60/1 • 20-10 | 208-240/60/1 • 20-10 | 208-240/60/1 • 30-14 |
| Shipping Dimensions - in. (mm) | H | 51" (1295) | 53 1/2" (1359) | 53 1/2" (1359) | 56 1/2" (1435) |
| | W | 29" (737) | 29" (737) | 30 1/2" (774) | 32" (813) |
| | D | 32 1/2" (826) | 36 1/4" (921) | 37 1/2" (953) | 41" (1041) |
| Net Weight - lb. (kg) | 353 (160) | 427 (193) | 496 (225) | 686 (311) | |
| Standard Shipping Weight - lb. (kg) | 373 (169) | 448 (203) | 519 (235) | 710 (322) | |
| Wood Crate Shipping Weight - lb. (kg) | 461 (209) | 536 (243) | 600 (272) | 810 (367) | |
| Agency Approvals | ETL, CE, ETLc | ETL, CE, ETLc | ETL, CE, ETLc | ETL, CE, ETLc | |

At Speed Queen, we're confident that our heavy duty commercial washers and dryers are built better to last longer, that we're offering the following limited warranty to prove it. (+Parts only. Labor not included. See Speed Queen Warranty Bond for specifics.)

- **Through three years+**
 - a. Any part of the washer, single and stack dryer or stack washer/dryer.
- **Through five years+**
 - a. Top load washer transmission assembly.
 - b. Base and cabinet assembly including top, lid and door, against rust from inside out.
- **Life of product+**
 - a. Stainless steel wash tub (top load washer) or stainless steel inner cylinder (front load washer).

Due to continuous product improvements, design and specifications subject to change without notice. The quality management systems at all Alliance Laundry Systems facilities have been awarded ISO 9001 certification. Features and certifications may vary by model.

